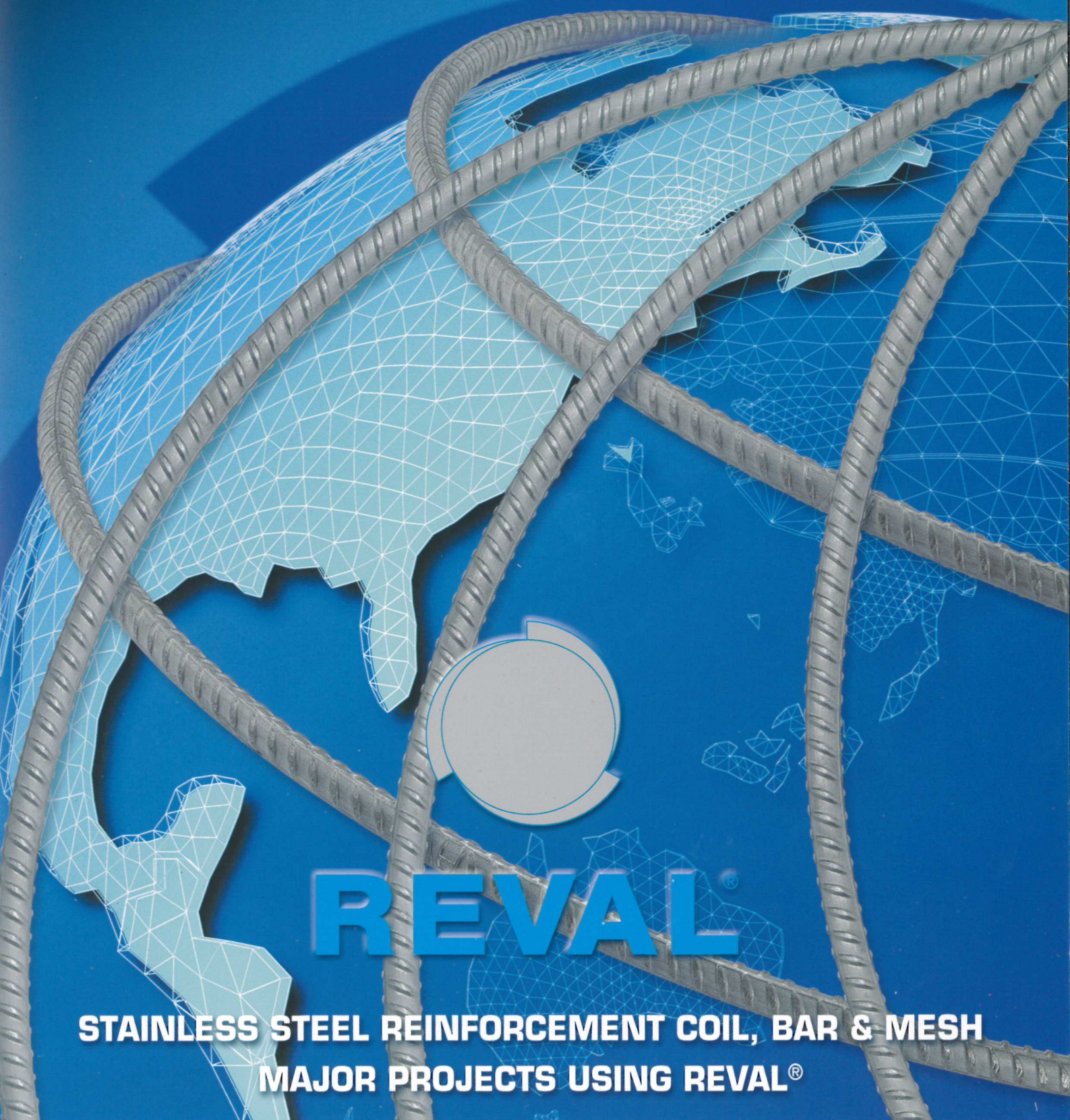




ACCIAIERIE
Valbruna



REVAL®

STAINLESS STEEL REINFORCEMENT COIL, BAR & MESH
MAJOR PROJECTS USING REVAL®

REVAL®

MAJOR PROJECTS USING AISI 304L

RAIL VIADUCT VENEZIA - PADOVA
ITALY

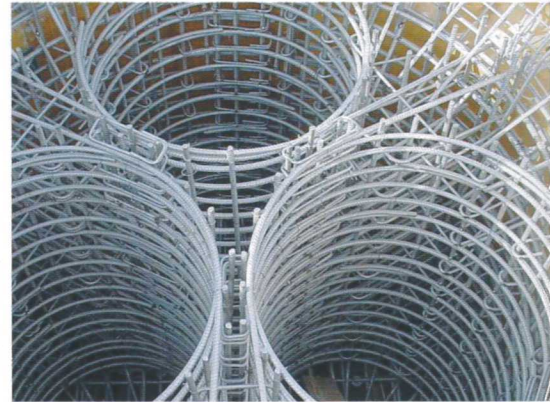
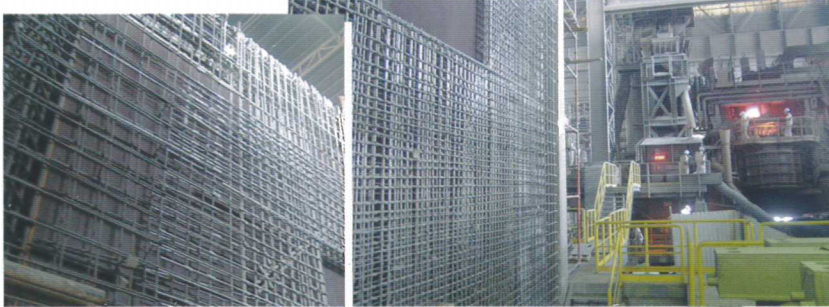


ROYAL HOSPITAL, MUSCAT
OMAN



NUCLEAR WASTE - FRANCE

EXTENSION MELTING SHOP
QATAR



COWSIDE BRIDGE,
NORTH YORKSHIRE - UK



BARTON BRIDGE
NORTH YORKSHIRE - UK

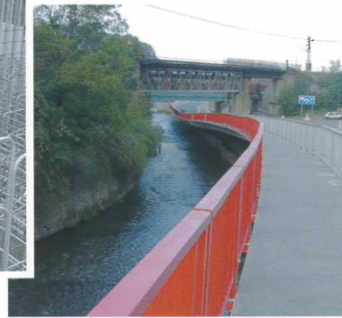
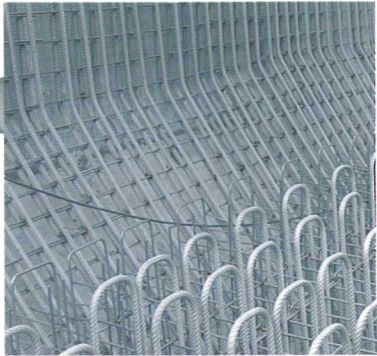


Others Projects: Highway 410, Sandalwood Parkway (Canada) • Road 87/88 Tamma Queensland (Australia) • Viaduct Sieve, Firenze (Italy) • Guildhall, London (UK) • Colosse

REVAL®

MAJOR PROJECTS USING AISI 316L

**BUSINESS BAY
CREEK EXTENSION
DUBAI - U.A.E.**



**BRIDGE IN THE
CZECH REPUBLIC**



**TRAPANI HARBOUR
ITALY**

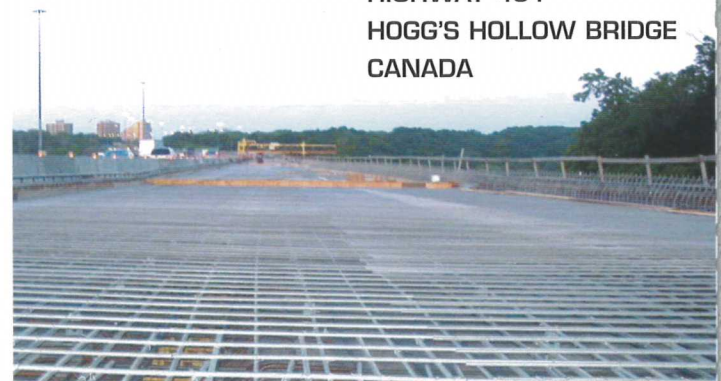


**THE PEARL, DOHA
QATAR**



**HIGHWAY 401
HOGG'S HOLLOW BRIDGE
CANADA**

**MOSE, VENEZIA
ITALY**



REVAL[®]

MAJOR PROJECTS USING AISI 318

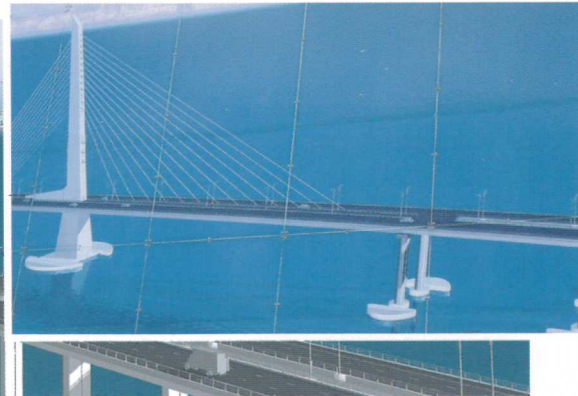
DRISCOLL BRIDGE ON THE
GARDEN STATE PARKWAY
WOODBRIIDGE, NJ - USA



NEW GUEST COMPLEX
MUSCAT - OMAN



SHENZHEN WESTERN CORRIDOR
HONG KONG



KHALID LAGOON EDGE WALL
SHARJAH - U.A.E.



ORUMIYEH BRIDGE
IRAN

in Motorway (Irish Republic) • Napoli Port, Graving Dock (Italy) • Gladstone Bridge, San Francisco (USA) • Underground, Jubilee Line, London (UK) and many others.

“REVAL[®] is the ultimate solution against risks from chloride attack on roads, bridges and constructions”

Compared to other construction materials, stainless steels have many unique properties that are advantageous not only from a corrosion standpoint, but from a strength and safety view-point as well.

Corrosion of steel reinforcement bar everywhere in the world is the most important cause of deterioration in reinforced concrete structures.

REVAL[®] is the material of choice for structures subject to corrosive environments.

Most projects follows British Standard BS 6744:2001 and the ASTM A955.

Valbruna is certified ISO 9001:2008 & AS9100 revision B, TÜV, DET NORSKE VERITAS and CARES (UK).

The Reval Department of ACCIAIERIE VALBRUNA can offer:

- Shipping across the World.
- On time delivery through the warehouses located in the most strategic area in the World, and also the availability of raw material, hence a steadfast supply on time.
- All sizes and grades in accordance with the most important Standard.
- Inventory of stainless rebars allowing us to be responsive to the needs of customers.
- The whole production cycle, from casting to finish product means high quality.
- Tagged, bundled and wrapped rebar as per bar list.
- Engineering & customers service.
- Couplers
- Meshes
- Tying wire





ACCIAIERIE
Valbruna

Headquarter and works:

36100 VICENZA (Italy)

Viale della Scienza - Z.I.

Tel. +39 (0)444 968211

Fax. +39 (0)444 963836

e-mail: reval.project@valbruna.it

www.reval-stainless-steel.com

www.valbruna-stainless-steel.com